



Navigating the Moodle LMS: The 3Cs in T&L

By: Iza Idris

ABOUT THE PRESENTER



- More than 15 years of experience in training and development for various industries including HR, Business, and TVET.
- Holding a Master's Degree in Instructional Technology
- A certified trainer under HRDC
- LMS Consultant & Trainer of Pukunui Malaysia
 - involved taking care of Moodle Learning Management Systems
 - conducted several training programmes
 - creating e-learning content for training purposes.



OUR SERVICES

Hosting

Custom
Development

LMS Support

Training



Communication

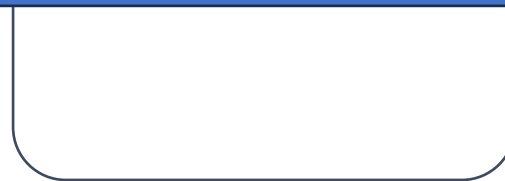
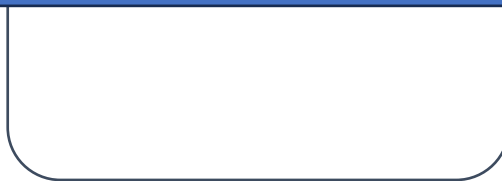
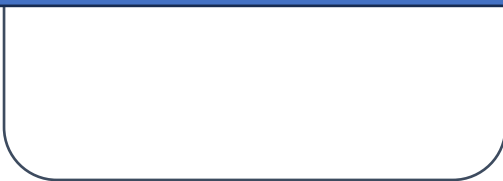


Collaboration



Connection

Q: How can the tools and resources in Moodle helps in achieving this?





Communication



Forum

Forum posts can be rated by teachers or students (peer evaluation). Ratings can be aggregated to form a final grade which is recorded in the gradebook.



Chat

Chat sessions are saved and can be made available for everyone to view or restricted to users with the capability to view chat session logs.



Choice

A choice activity may be used

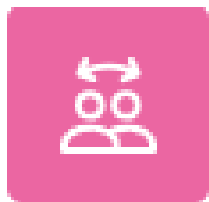
- As a quick poll to stimulate thinking about a topic
- To quickly test students' understanding
- To facilitate student decision-making, for example allowing students to vote on a direction for the course



Course Presentation

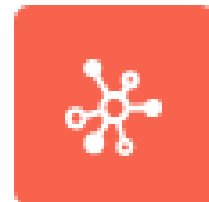


Collaboration



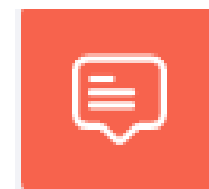
Workshop

Students are given the opportunity to assess one or more of their peers' submissions. Submissions and reviewers may be anonymous if required.



Wiki

The wiki activity module enables participants to add and edit a collection of web pages. A wiki can be collaborative, with everyone being able to edit it, or individual, where everyone has their own wiki which only they can edit.



Forum

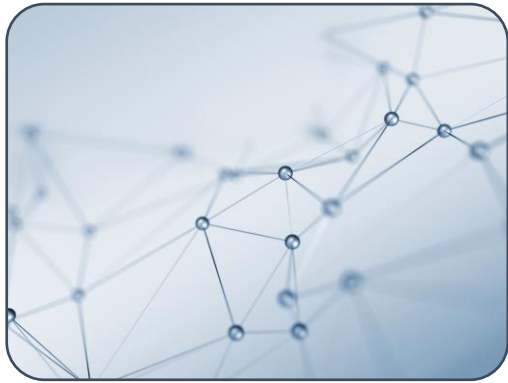
Forum posts can be rated by teachers or students (peer evaluation). Ratings can be aggregated to form a final grade which is recorded in the gradebook.



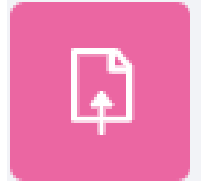
Glossary

Glossaries have many uses, such as

- A collaborative bank of key terms
- A 'getting to know you' space where new students add their name and personal details
- A 'handy tips' resource of best practice in a practical subject
- A sharing area of useful videos, images or sound files
- A revision resource of facts to remember



Connection



Assignment

The assignment activity module enables a teacher to communicate tasks, collect work and provide grades and feedback.



Lesson

Lessons may be used

- For self-directed learning of a new topic
- For scenarios or simulations/decision-making exercises
- For differentiated revision, with different sets of revision questions depending upon answers given to initial questions



Quiz

Quizzes may be used

- As course exams
- As mini tests for reading assignments or at the end of a topic
- As exam practice using questions from past exams
- To deliver immediate feedback about performance
- For self-assessment



Interactive Book



Interactive Video



Branching Scenario



THANK YOU



CONTACT US AT:



+60 3 8408 1894



<https://pukunui.com.my/>



hello.my@pukunui.com **GENERAL**

support.my@pukunui.com **SUPPORT**